

HERE WE

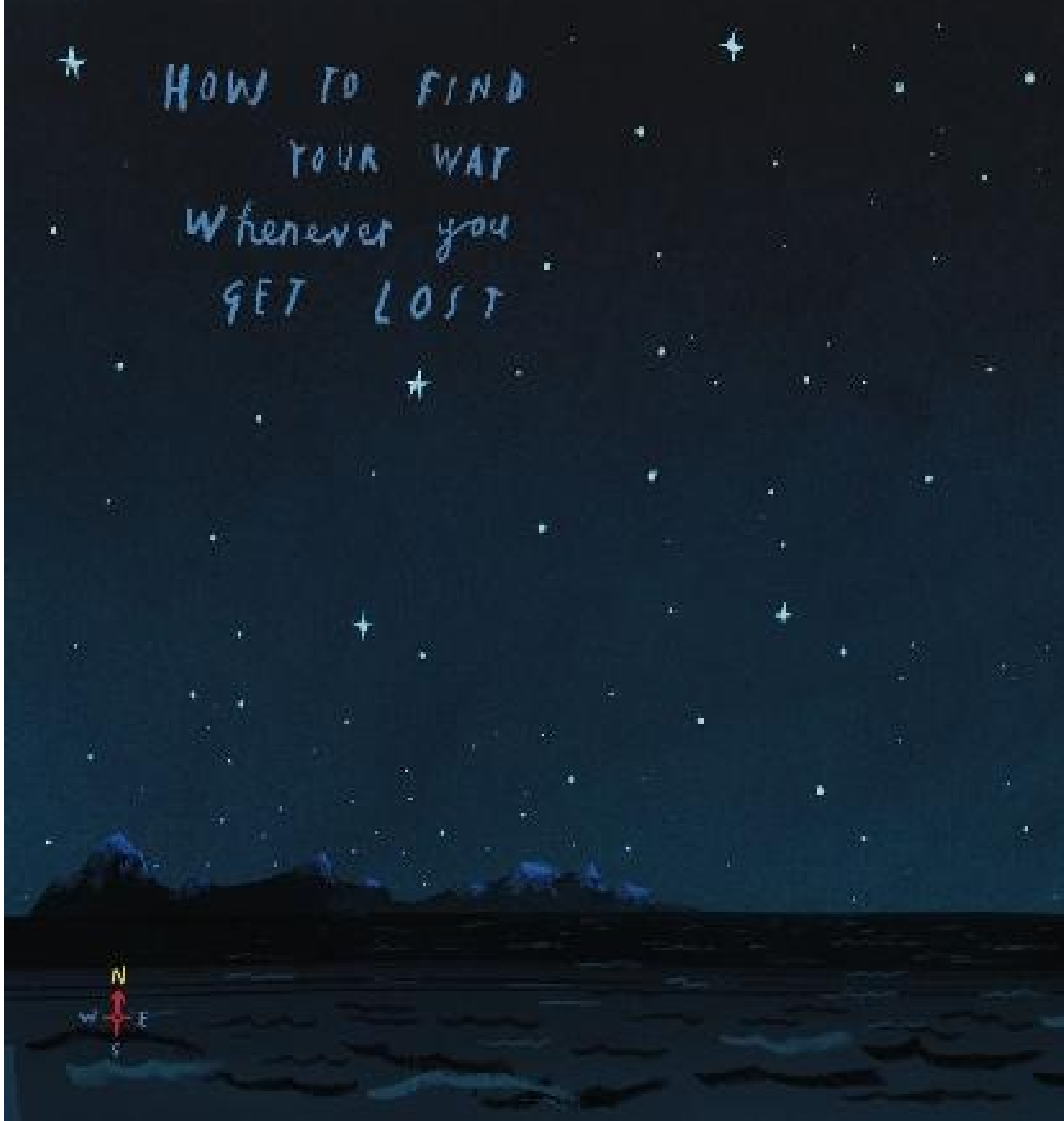
An illustration of the Earth as a blue and white sphere with black landmasses and yellow city lights. A red rocket with a yellow flame is on the left, leaving a yellow orbital path. A blue satellite with two solar panels is on the right, also on a yellow orbital path. A small white airplane is in the upper right. The background is a dark teal space with white stars and a light blue nebula at the bottom.

ARE

NOTES FOR LIVING  
ON PLANET EARTH

OLIVER JEFFERS

★ HOW TO FIND  
YOUR WAY  
Whenever you  
GET LOST



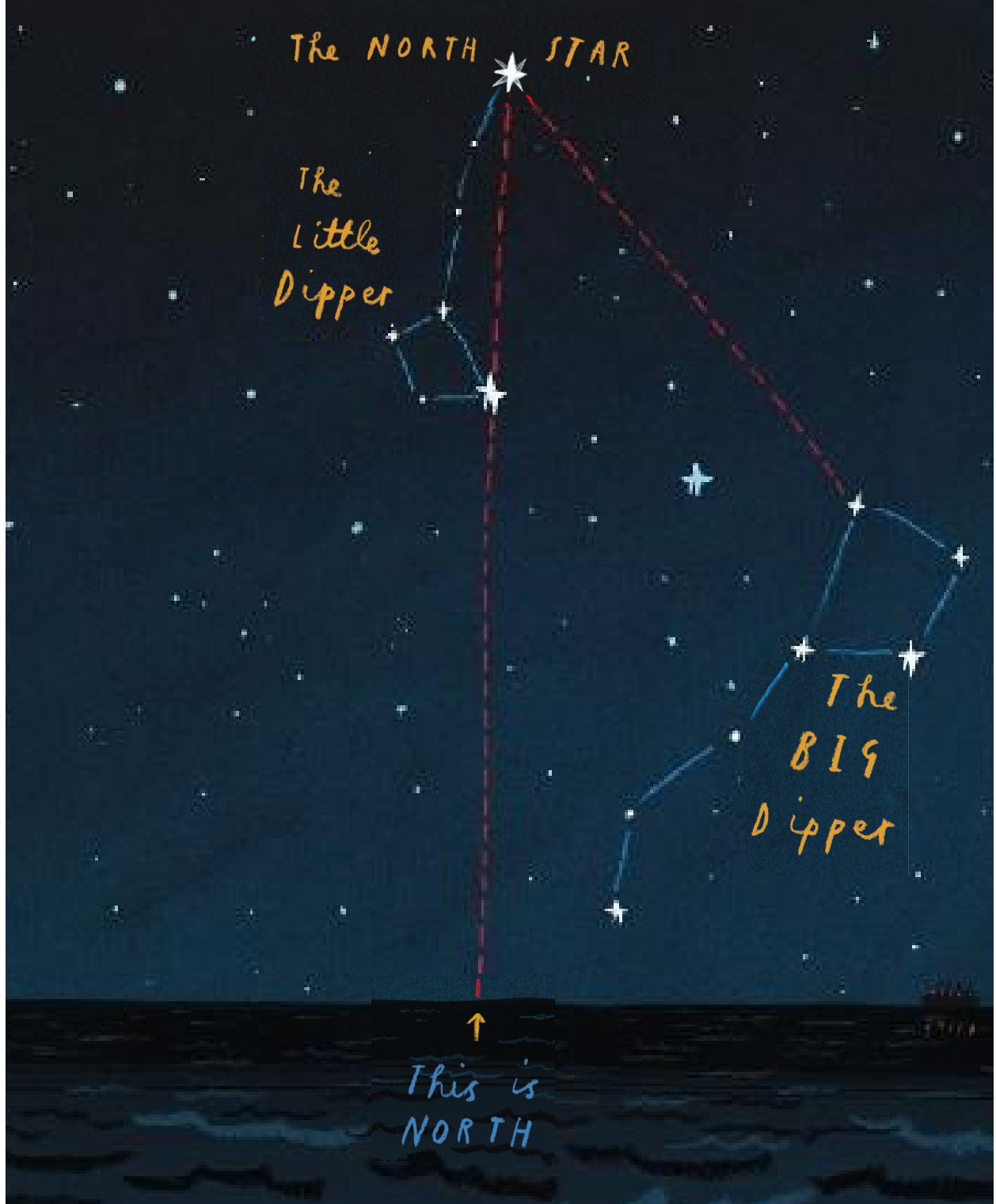
The NORTH STAR

The  
Little  
Dipper

The  
BIG  
Dipper



This is  
NORTH



The NORTH STAR

The  
Little  
Dipper

The  
BIG  
Dipper



This is  
NORTH





HERE WE  
ARE

NOTES FOR LIVING  
ON PLANET EARTH



OLIVER JEFFERS

HERE WE  
ARE

NOTES FOR LIVING  
ON PLANET EARTH



OLIVER JEFFERS

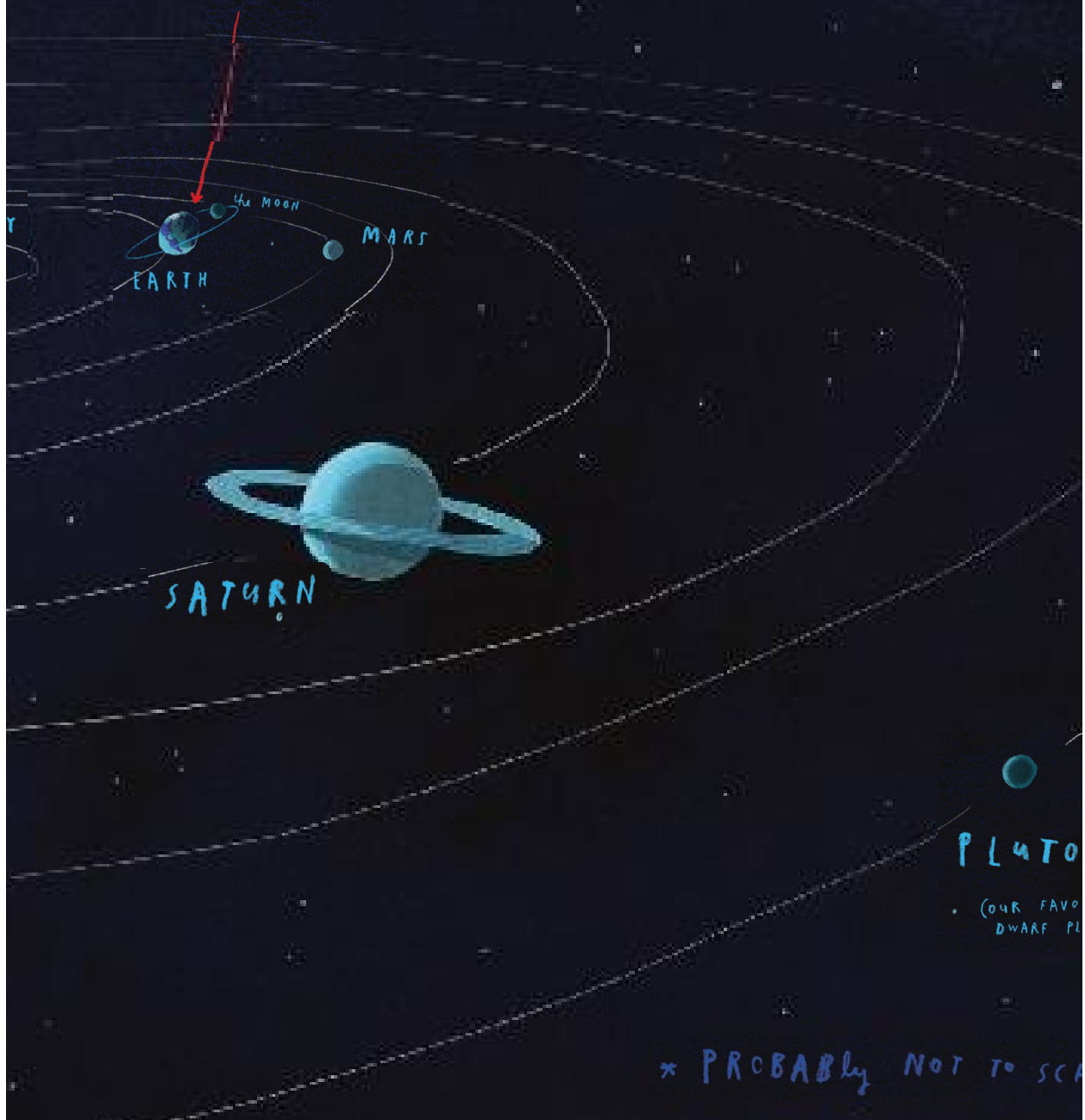
# OUR SOLAR SYSTEM

(ONE OF MILLIONS OF OTHERS IN THE UNIVERSE)





HERE  
WE  
ARE



HERE  
WE  
ARE

MERCURY

EARTH

the MOON

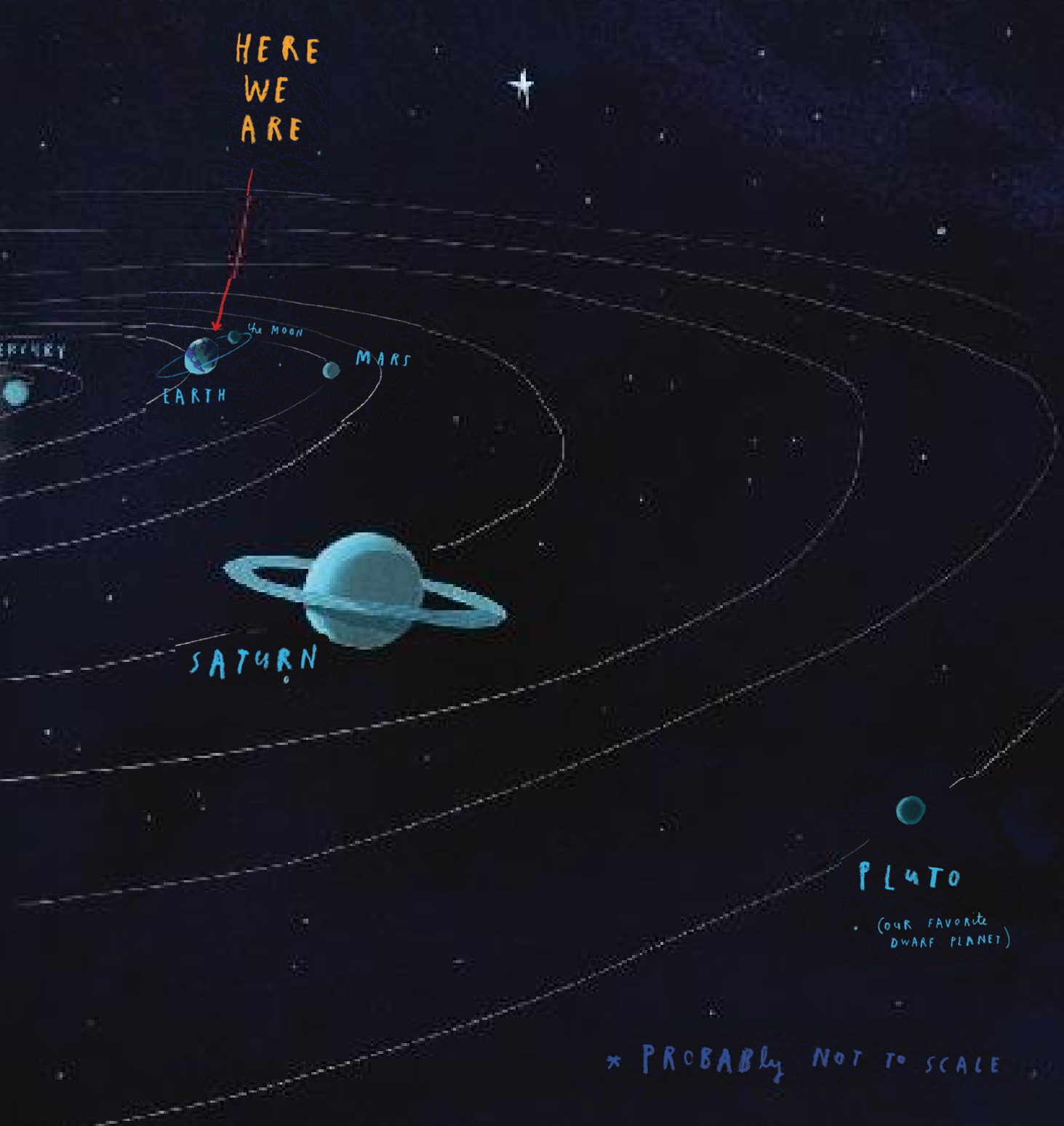
MARS

SATURN

PLUTO

• (OUR FAVORITE  
DWARF PLANET)

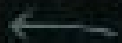
\* PROBABLY NOT TO SCALE













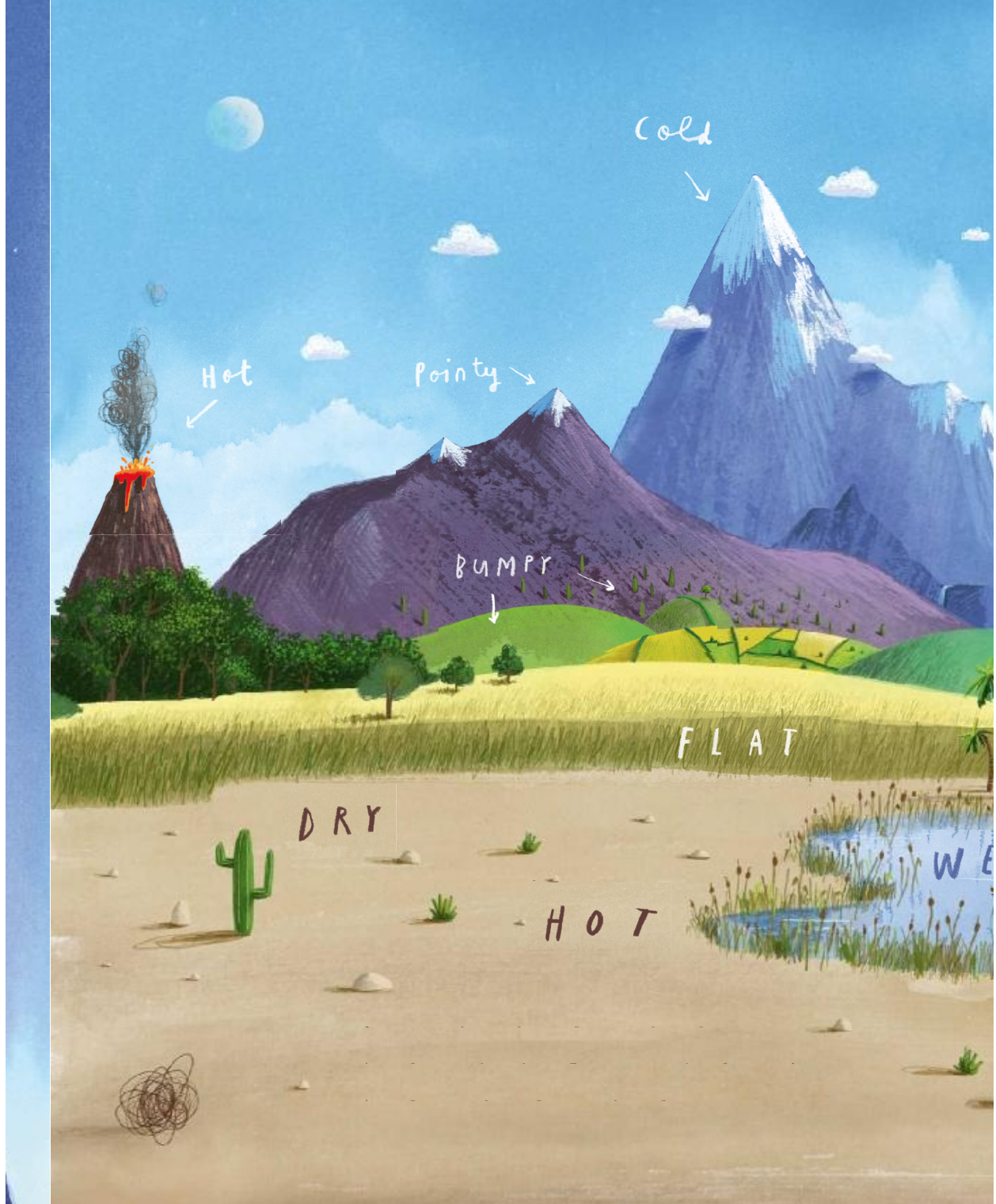




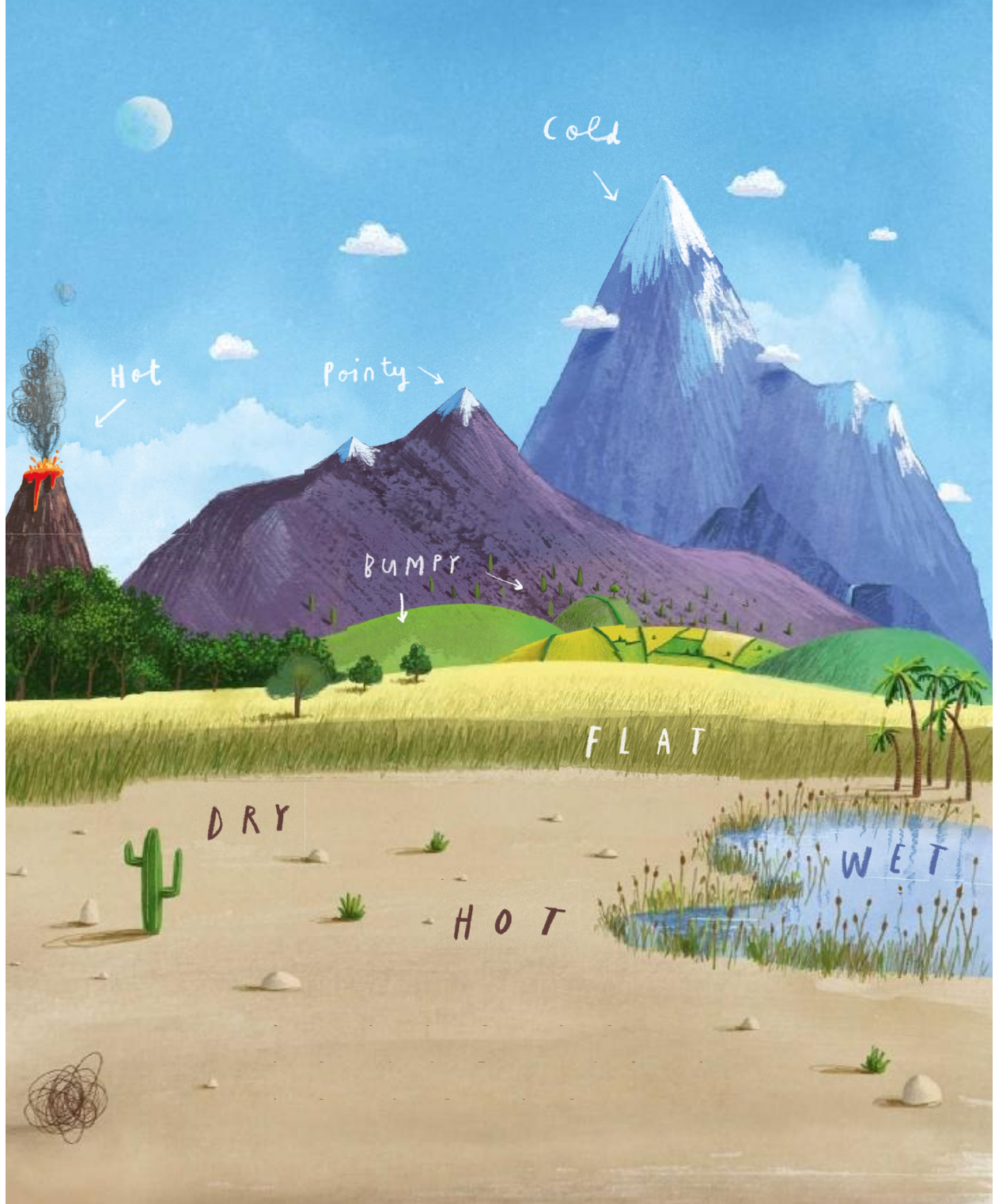


LAND  
(ROCK and DIRT)

SEA  
(WATER)



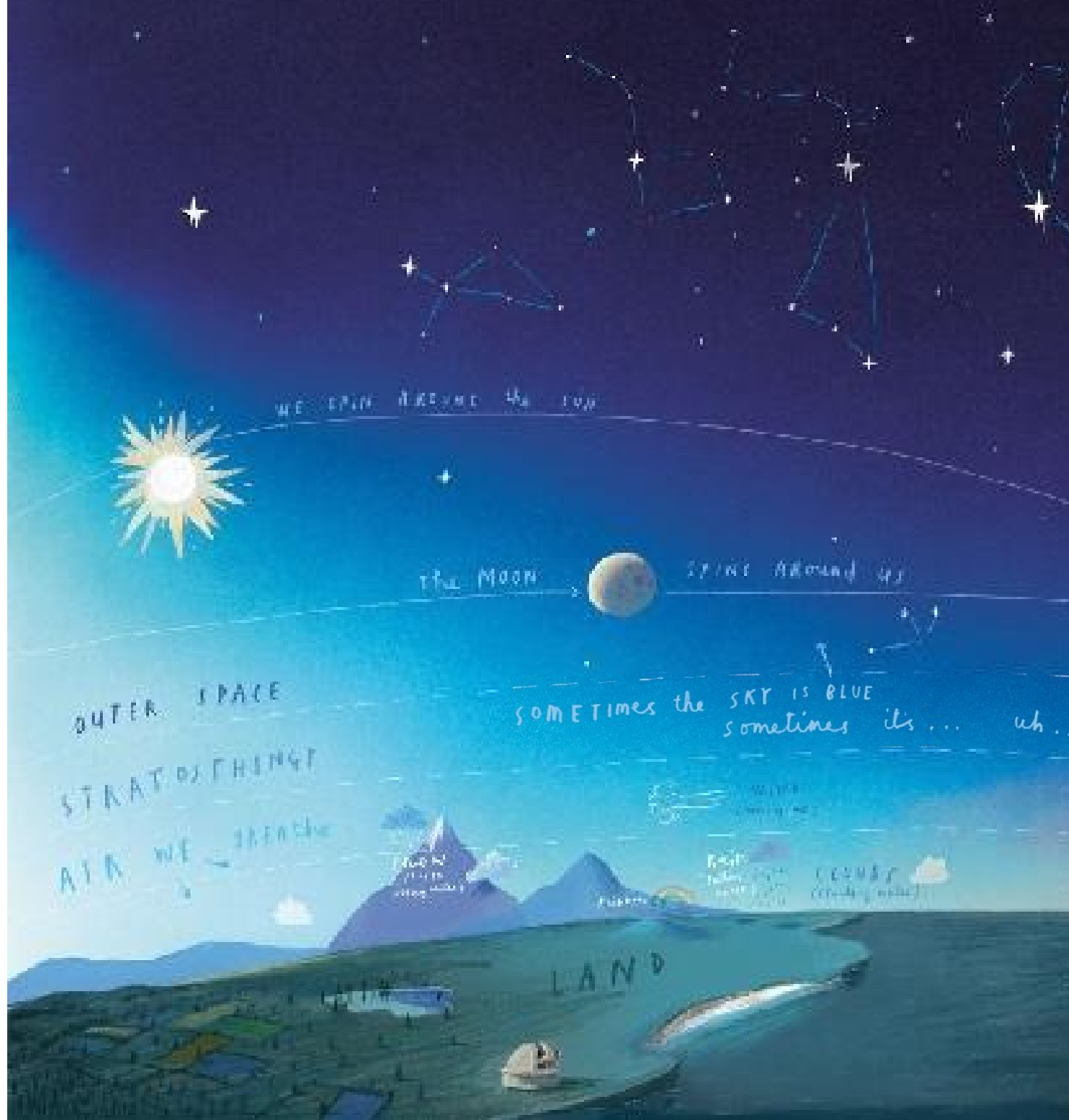














The MILKY WAY  
(billions of other STARS and PLANETS)

CONSTELLATIONS  
(Patterns of Stars)

Other  
planets

STARS

(BURNING balls  
of GAS, VERY far away  
that you see at night...  
unless it's RAINING.)

uh... NOT

STORM  
clouds

lightning

OUR  
ATMOSPHERE

SEA



# The MILKY WAY

(billions of other STARS and PLANETS)

CONSTELLATIONS  
(Patterns of Stars)

Other  
planets

STARS

(BURNING balls  
of GAS, VERY far away  
that you see at night...  
unless it's RAINING.)

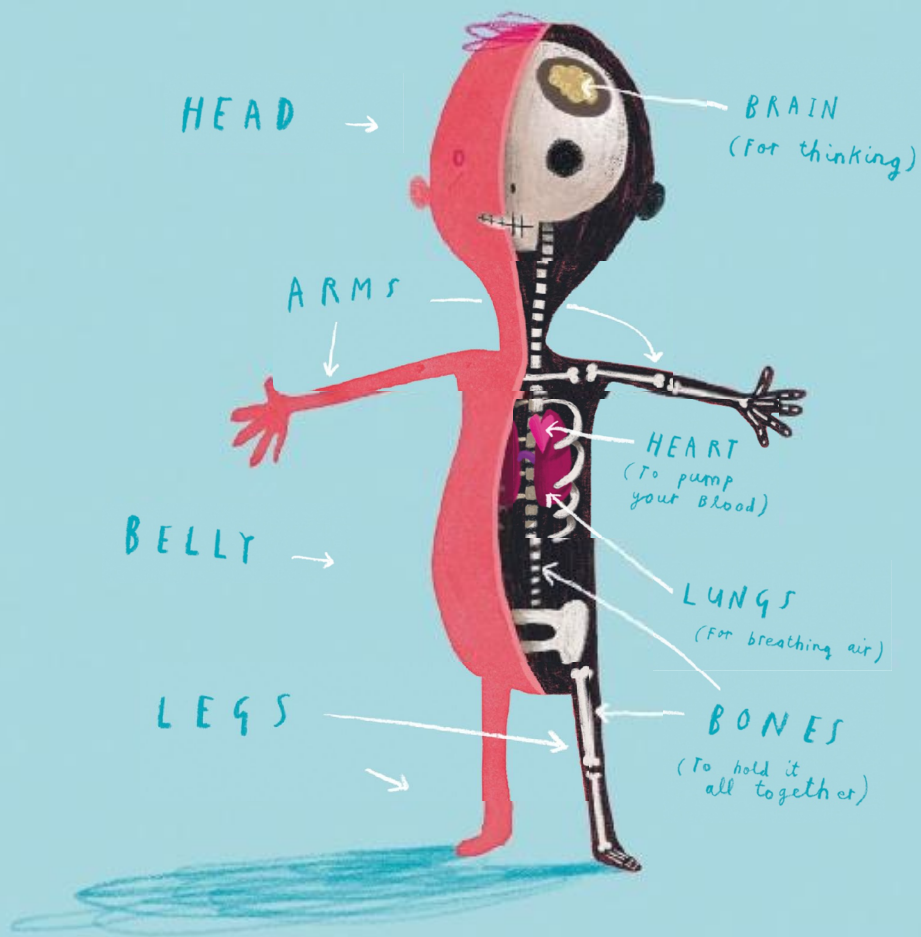
it's... uh... NOT

STORM  
clouds

lightning

OUR  
ATMOSPHERE

SEA



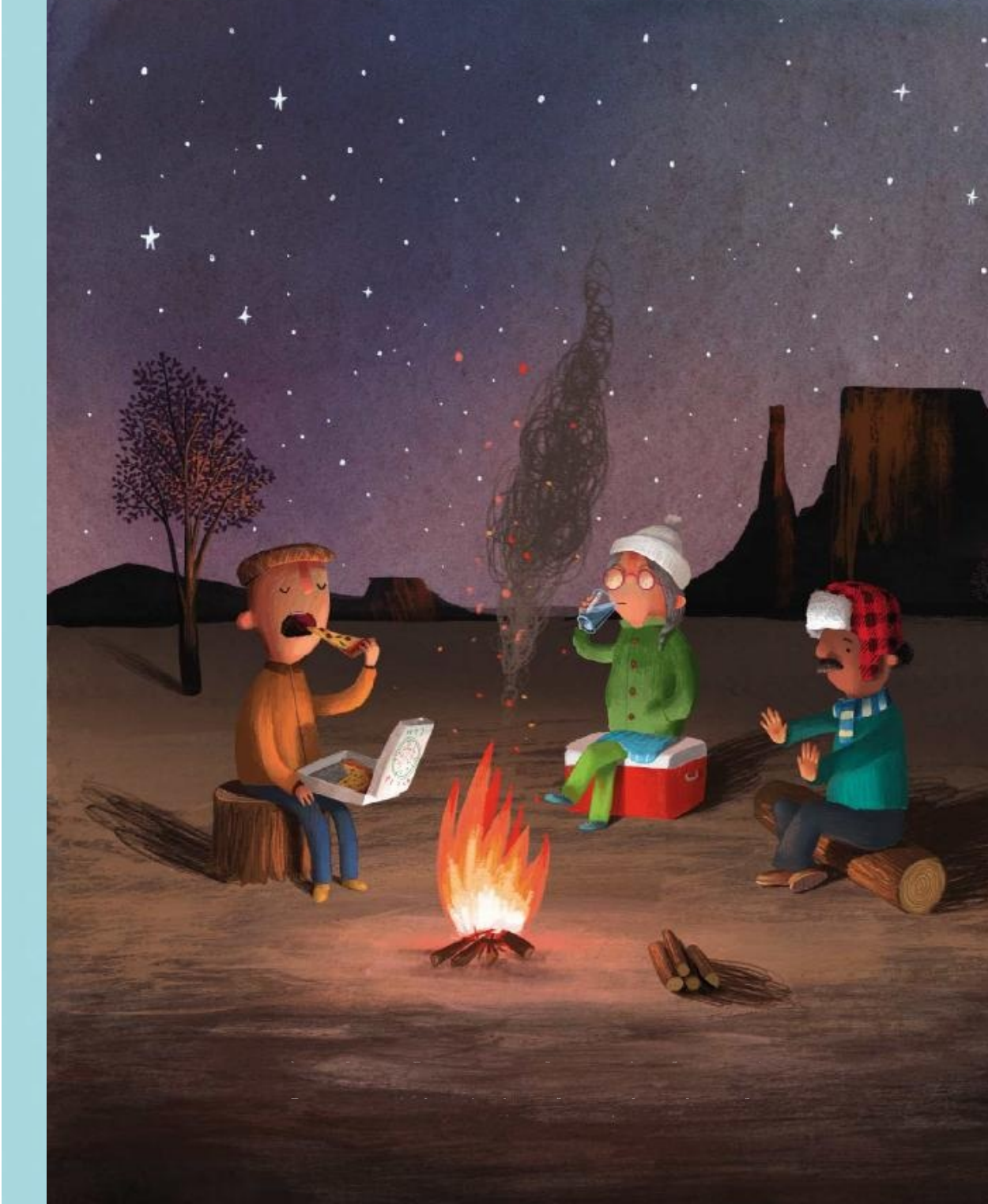
Bits that grow back



Nails



Hair































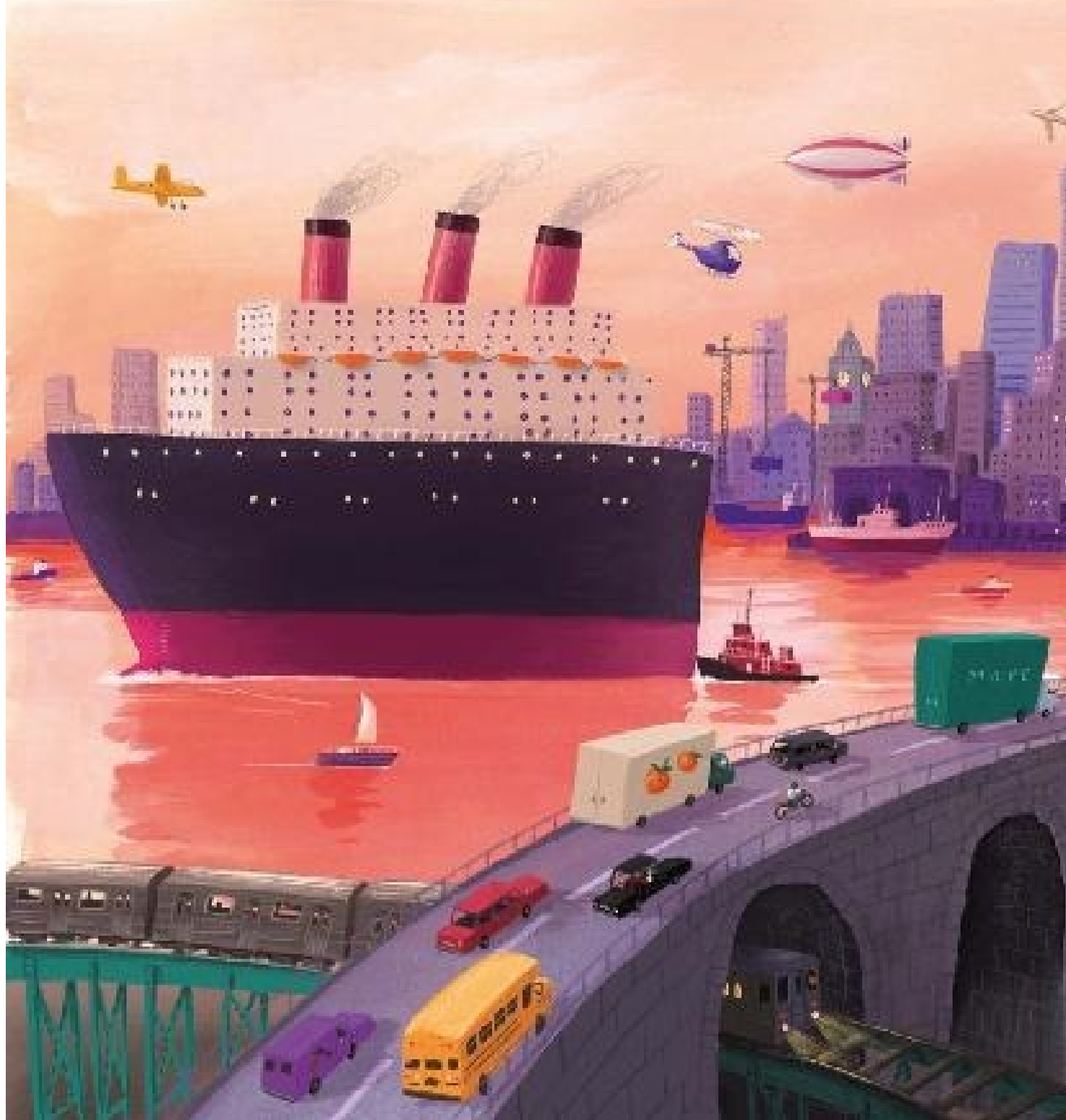




























































\_\_\_\_\_

\_\_\_\_\_

\_\_\_\_\_

\_\_\_\_\_

\_\_\_\_\_

\_\_\_\_\_

\_\_\_\_\_

\_\_\_\_\_

\_\_\_\_\_

\_\_\_\_\_

\_\_\_\_\_

\_\_\_\_\_

\_\_\_\_\_



\_\_\_\_\_

\_\_\_\_\_

\_\_\_\_\_

\_\_\_\_\_

\_\_\_\_\_

\_\_\_\_\_



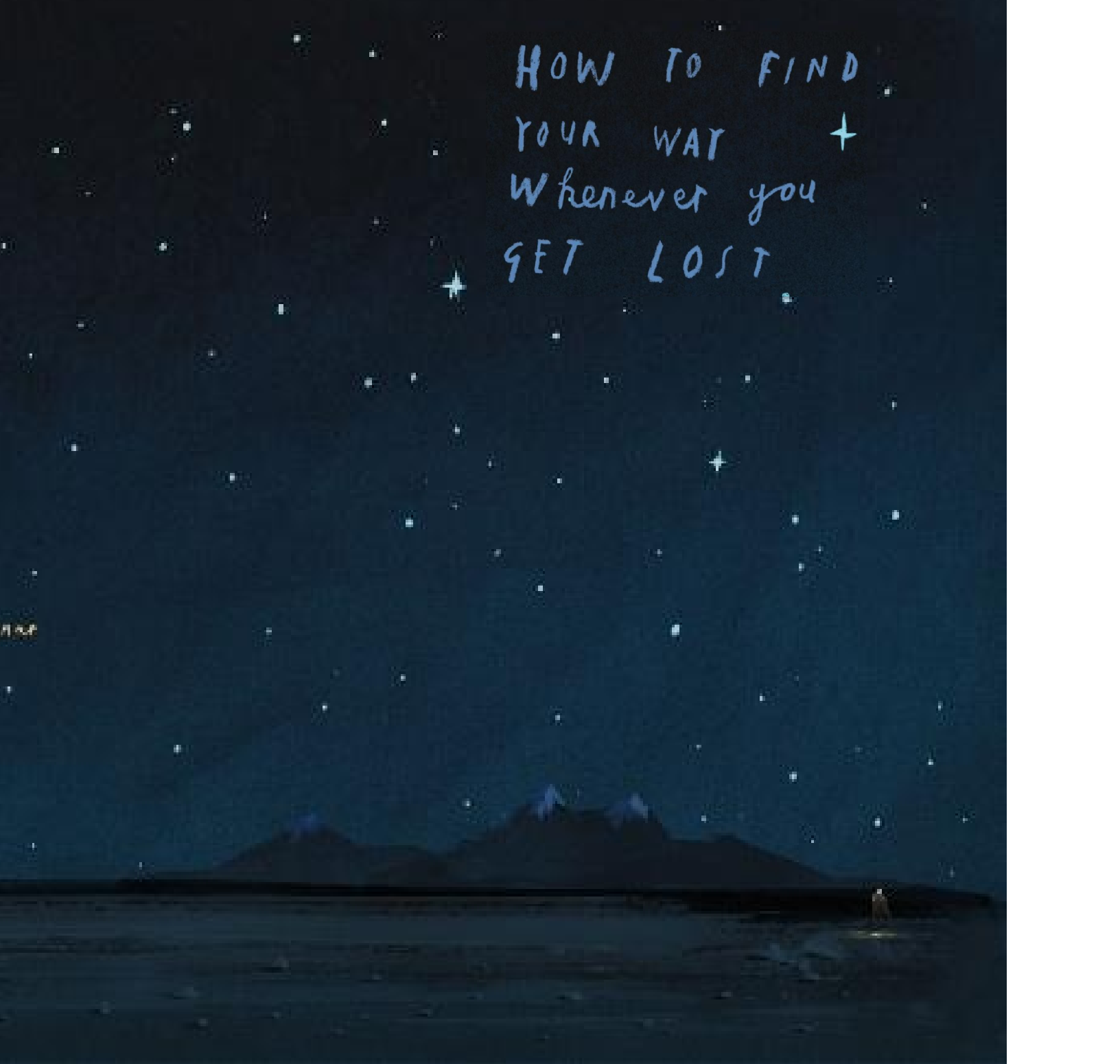


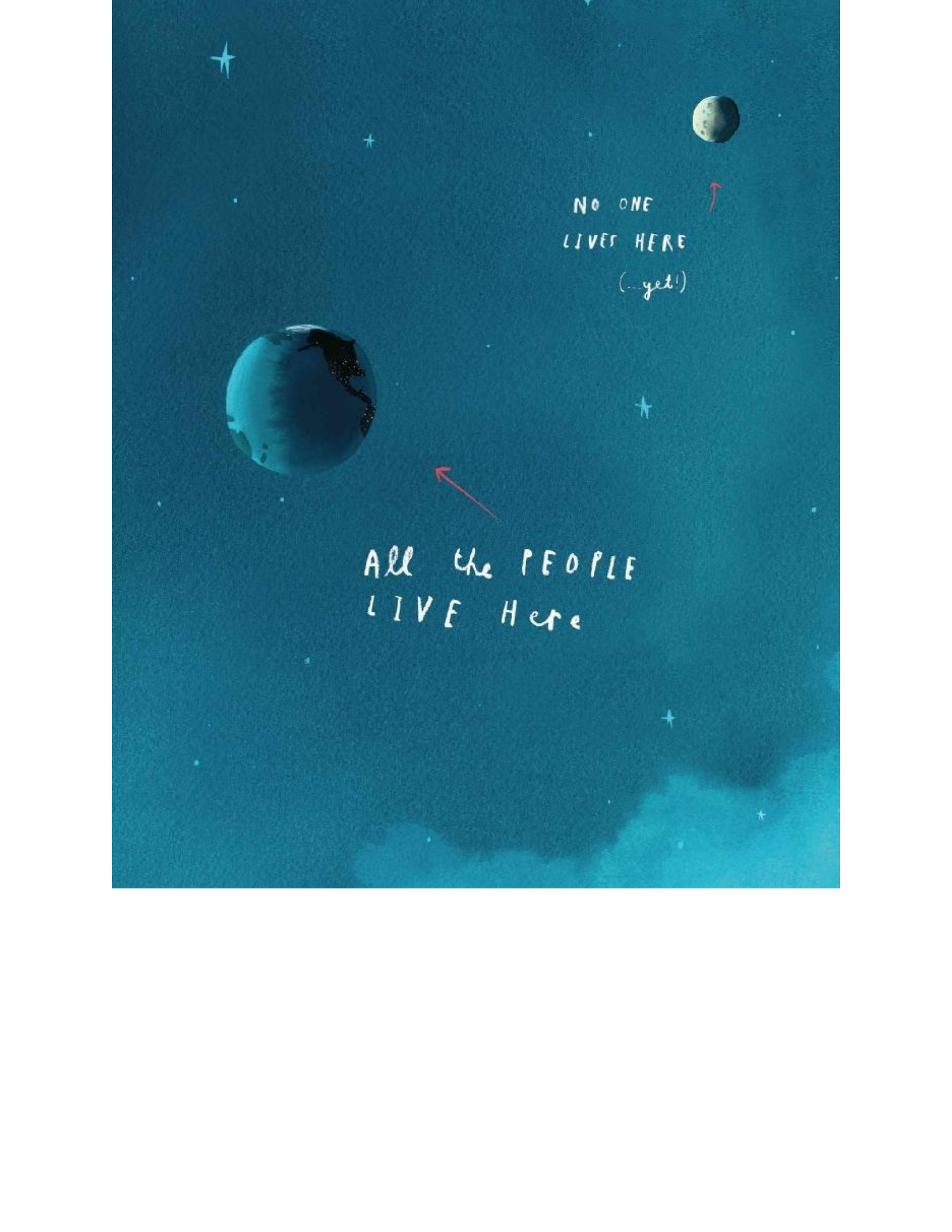


HOW TO FIND  
YOUR WAY +  
Whenever you  
GET LOST



HOW TO FIND  
YOUR WAY +  
Whenever you  
GET LOST





NO ONE  
LIVES HERE  
(...yet!)

ALL the PEOPLE  
LIVE Here



NO ONE  
LIVES HERE  
(...yet!)

ALL the PEOPLE  
LIVE Here